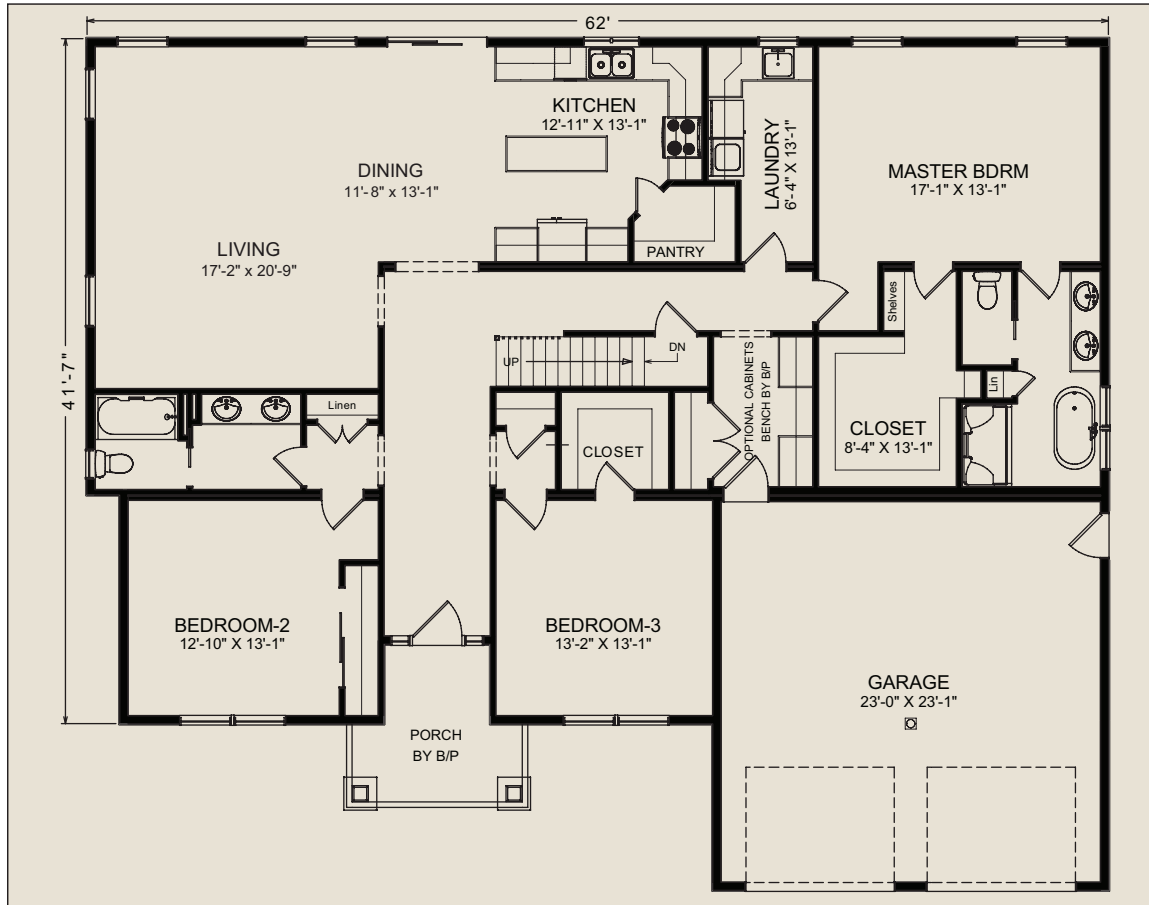
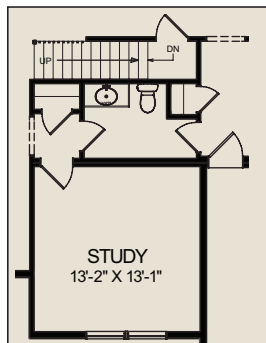


# The Redwood

27'8" x 44' • 2464 Sq. Ft.



Optional Study



Featuring High-Quality Andersen® Products  
**Andersen®** WINDOWS • DOORS 

Renderings shown with optional features not included in base price. Rendering and floor plan dimensions are approximate. All specifications must be written in the contract, no oral conditions. Please consult your Westchester Independent Builder for more details. "Andersen" and all other marks where denoted are trademarks of Andersen Corporation. ©2018 Andersen Corporation. All rights reserved.

## Standard Redwood Features

- 7/12 roof pitch
- Laundry room with washer/dryer hookups and raised panel oak cabinets with laminate countertop and stainless steel laundry sink.
- Oak rails to basement (stairs to basement by builder)
- Master Bathroom includes:
  - Double bowl vanity
  - Private commode area
  - 48" X 48" shower prep with pan
  - Dressing area with cabinets, mirror and lighting
  - Large walk-in closet
- Mud room includes drop off area with raised panel oak base and wall cabinetry for storage
- Kitchen Features
  - Merillat raised panel oak or recess panel maple cabinets
  - Open soffit
  - Center island
  - Oversized pantry closet
  - Casement window over kitchen sink
- Exterior Features:
  - Front entry door with double sidelights
  - 15 lite rear door off dining room
  - B-label door from mud room to garage
  - Transom windows in bathrooms and master bedroom
- Andersen® Tilt Wash® 400 Series windows with High Performance™ insulating glass, removable grilles and full screens.



**WESTCHESTER MODULAR HOMES, INC.**  
 AN EMPLOYEE OWNED COMPANY

30 Reagans Mill Road • Wingdale, NY 12594

**(800) 832-3888**

**WestchesterModular.com**